

Los Inocentes

Moderato $\text{♩} = 72$

5

Handwritten musical notation for measures 5-8. The music is in 3/4 time. Measure 5 starts with a treble clef and a key signature of one flat. It features a melody with eighth and quarter notes, including a triplet of eighth notes. A dynamic marking of *mp* is present. Trills are indicated above measures 6 and 8. A hairpin crescendo is shown across measures 6-8.

Poco Più Mosso

9

Handwritten musical notation for measures 9-13. The music is in 4/4 time. Measure 9 starts with a treble clef and a key signature of one flat. It features a melody with quarter and eighth notes. Dynamic markings include *mf*, *sfz*, and *a niente*. Trills are indicated above measures 10, 11, and 12. A hairpin crescendo is shown across measures 10-12. Measure 13 has a dynamic marking of *mf*.

Lento $\text{♩} = 50$

14

Handwritten musical notation for measures 14-15. The music is in 4/4 time. Measure 14 starts with a treble clef and a key signature of one flat. It features a melody with quarter and eighth notes. A dynamic marking of *mp* is present. A hairpin crescendo is shown across measures 14-15.

16

Handwritten musical notation for measures 16-17. The music is in 4/4 time. Measure 16 starts with a treble clef and a key signature of one flat. It features a melody with quarter and eighth notes, including a triplet of eighth notes. A dynamic marking of *mp* is present. A hairpin crescendo is shown across measures 16-17.

18

Handwritten musical notation for measures 18-20. The music is in 4/4 time. Measure 18 starts with a treble clef and a key signature of one flat. It features a melody with quarter and eighth notes, including a triplet of eighth notes. A dynamic marking of *mp* is present. Trills are indicated above measures 19 and 20. A hairpin crescendo is shown across measures 18-20.

21

Handwritten musical notation for measures 21-23. The music is in 4/4 time. Measure 21 starts with a treble clef and a key signature of one flat. It features a melody with quarter and eighth notes, including a triplet of eighth notes. A dynamic marking of *mp* is present. A hairpin crescendo is shown across measures 21-23.

24

Handwritten musical notation for measures 24-26. The music is in 4/4 time. Measure 24 starts with a treble clef and a key signature of one flat. It features a melody with quarter and eighth notes, including a triplet of eighth notes. A dynamic marking of *mp* is present. A hairpin crescendo is shown across measures 24-26.

27

Handwritten musical notation for measures 27-30. The music is in 4/4 time. Measure 27 starts with a treble clef and a key signature of one flat. It features a melody with quarter and eighth notes, including a triplet of eighth notes. A dynamic marking of *mp* is present. Trills are indicated above measures 28 and 30. A hairpin crescendo is shown across measures 27-30.

31 Agitato $\text{♩} = 86$

31

Handwritten musical notation for measures 31-34. The music is in 4/4 time. Measure 31 starts with a treble clef and a key signature of one flat. It features a melody with quarter and eighth notes, including a triplet of eighth notes. Dynamic markings include *mf* and *f*. A hairpin crescendo is shown across measures 31-34.

33 *Meno Mosso*

3
4

mf

p

36

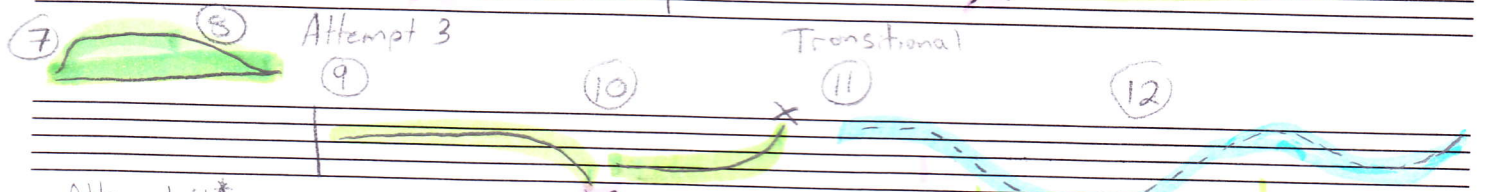
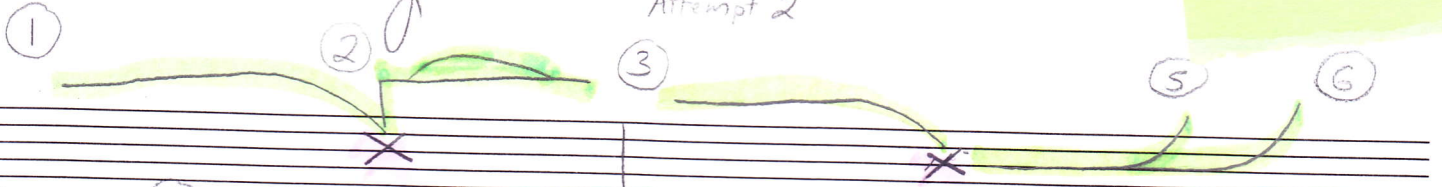
a niente

grad

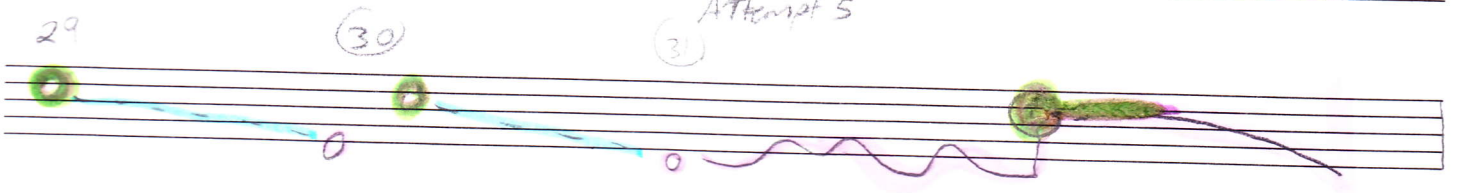
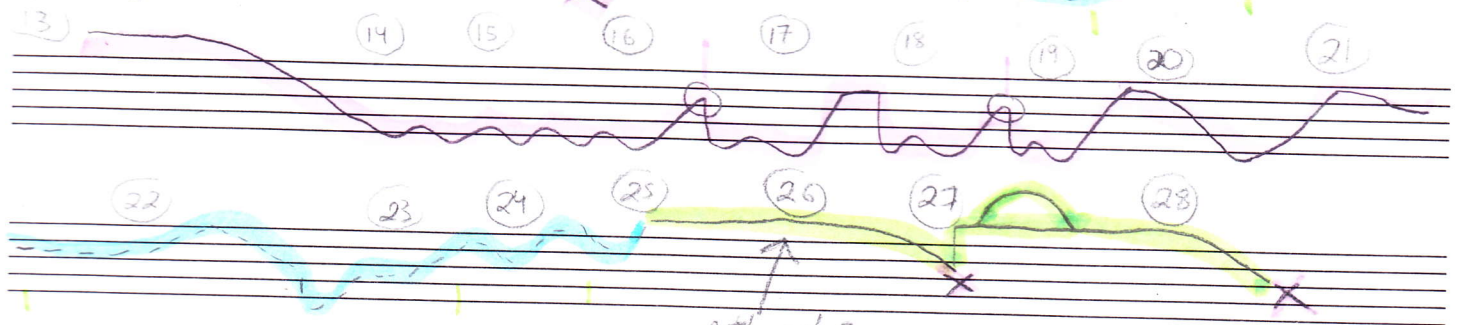
empt 1

Syrinx Model



Attempt 2



Attempt 4*



Attempt 5



Tuesday, February 15, 2011

Piece Modeled on Syrinx

My piece is modeled on Syrinx in that the basic idea is that of a struggle between two outlooks, the first being an outlook of naivety and innocence, and the other being one of seduction and corruption. I have chosen to use different scale systems to illustrate these ideas, a whole tone for the innocent and octotonic for the seducing voice.

The piece as a whole follows my model very closely in the struggle for dominance of the two scale systems. In my piece green is equivalent to whole tone sections, pink is octotonic sections, and blue is a transitional area where the two are in direct conflict.